



COMMUNITY ECONOMIC DEVELOPMENT

Transforming Local Economies

OCTOBER 2020





AGENDA

- Community Economic Development Grants
 - ✓ Definition
 - ✓ Statistics
 - ✓ Challenges
 - ✓ Opportunities
- The Hunger Virus: How COVID-19 is Fueling Hunger in the World
- What Rotarians are Doing in the World ?
- What Can a Cadre do ?

CED DEFINITION & RELEVANCE

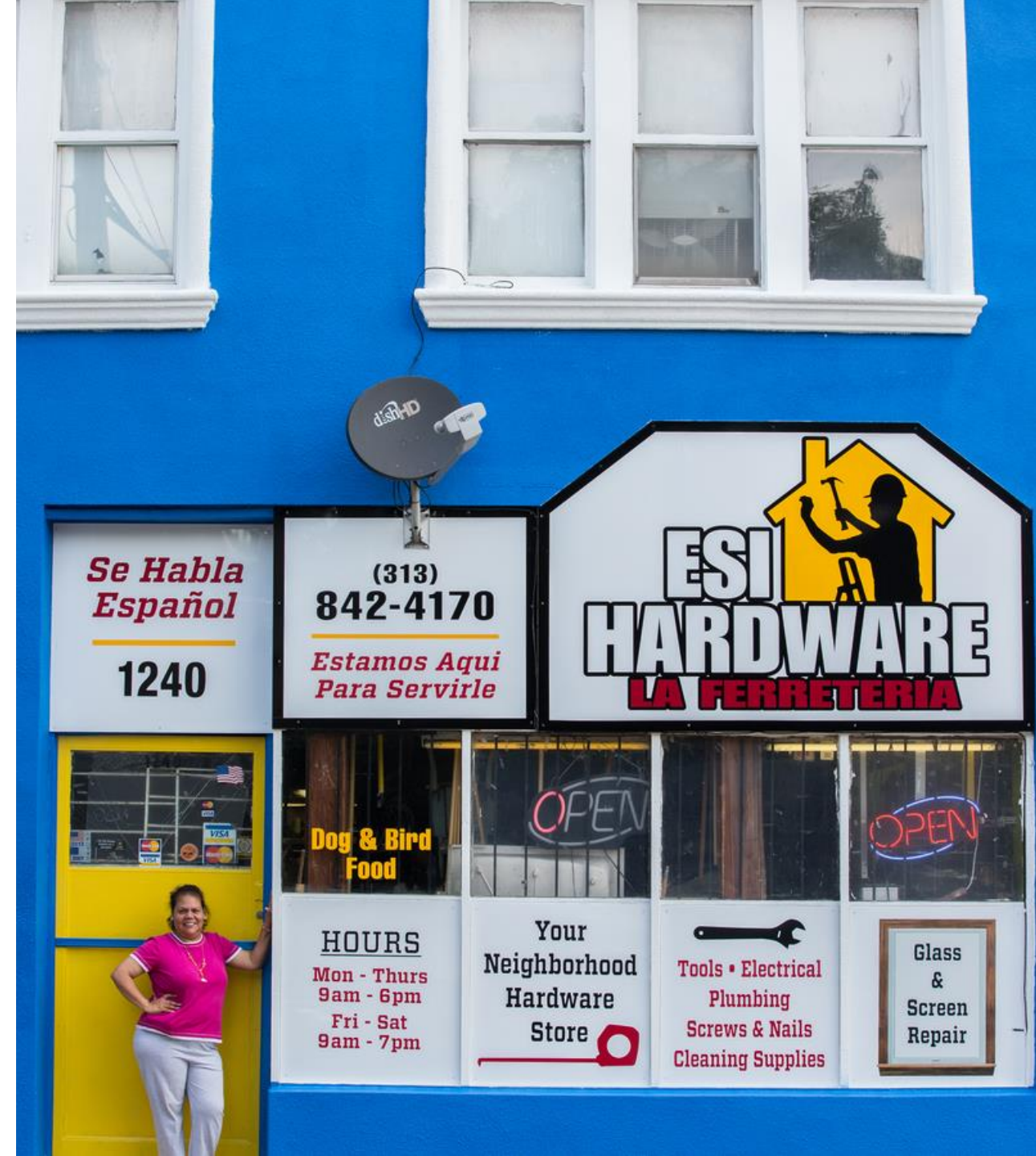
Rotary supports investments in people and communities to alleviate poverty, creating measurable and enduring economic improvements in poor and underserved areas.

- Why is Community Economic Development Relevant?
 - ✓ Persistent inequality and exclusion (Inequality across regions and within countries, uneven progress in SGDs)
 - ✓ Increasing economic risks and instability (Lack of employment, high food prices, austerity measures and instability disproportionately affect those already vulnerable, e.g. women, youth and children)
 - ✓ Climate Crisis Adaptation(Poor and marginalized communities and children, particularly vulnerable to climate effect)
 - ✓ Population trends and demographic changes (Youth bulge, strains in employment, migration and urbanization patterns, changing family and support structures)

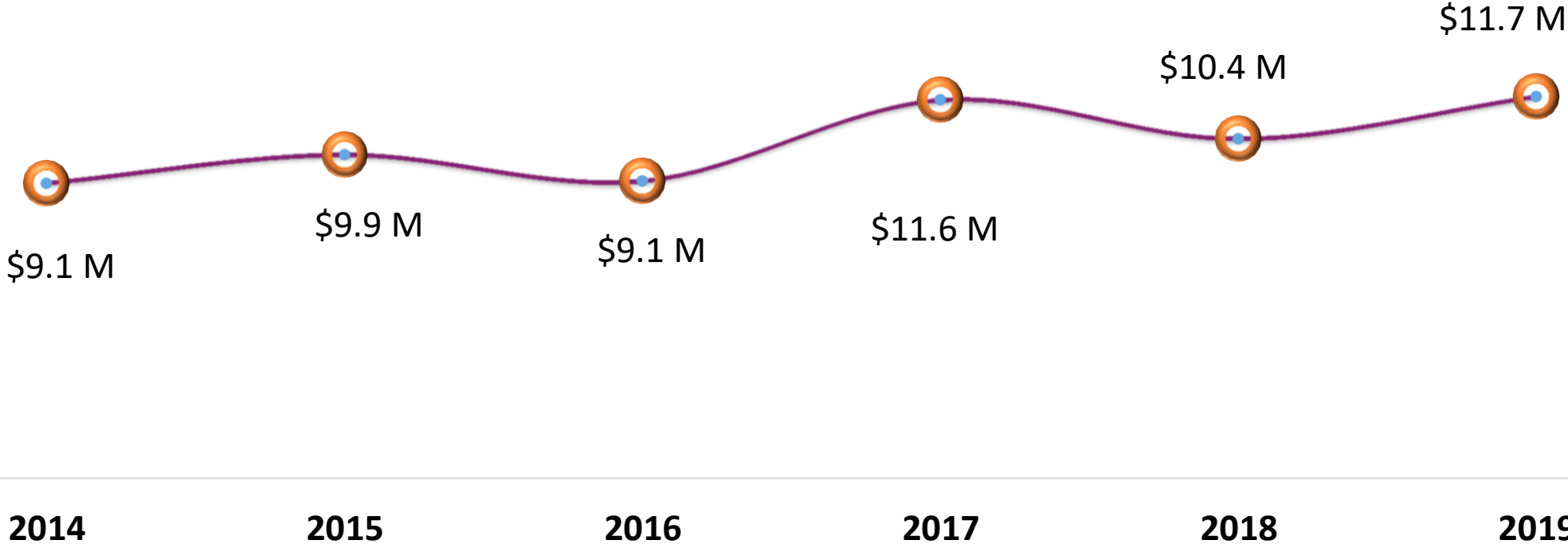
TRF INVESTMENTS

1,054
grants

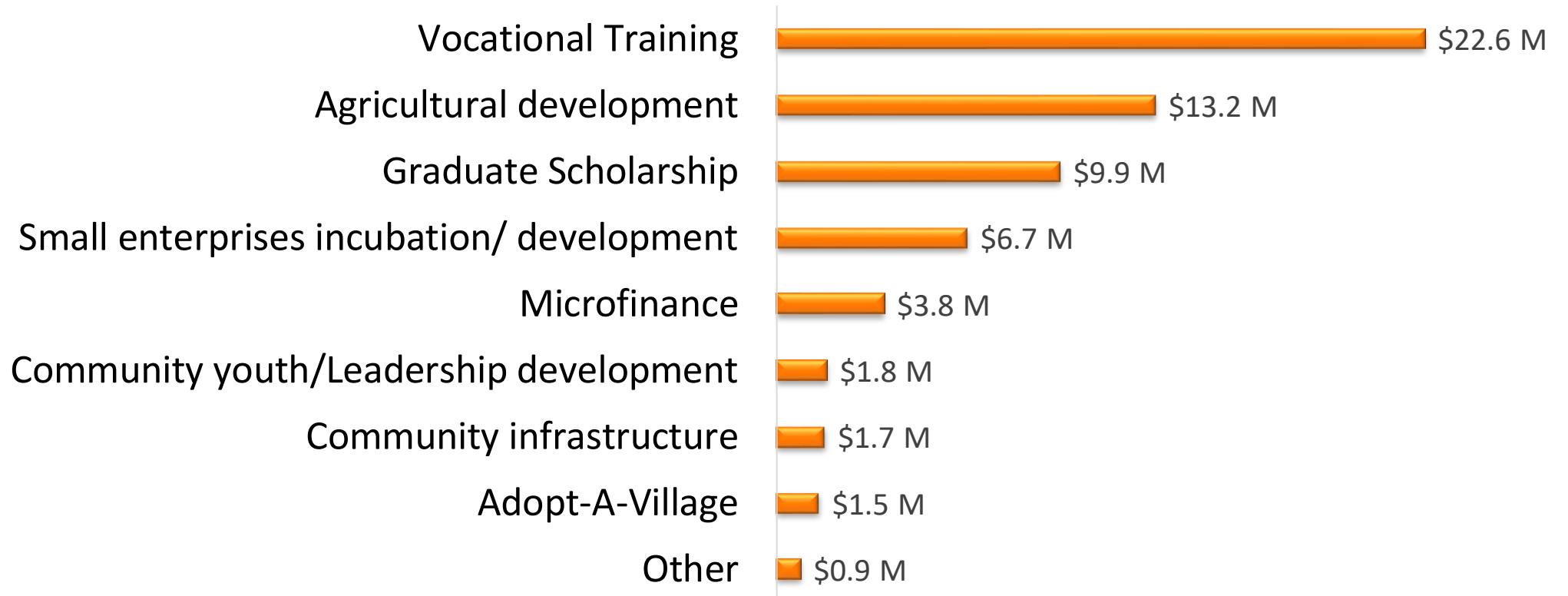
\$61.9
million



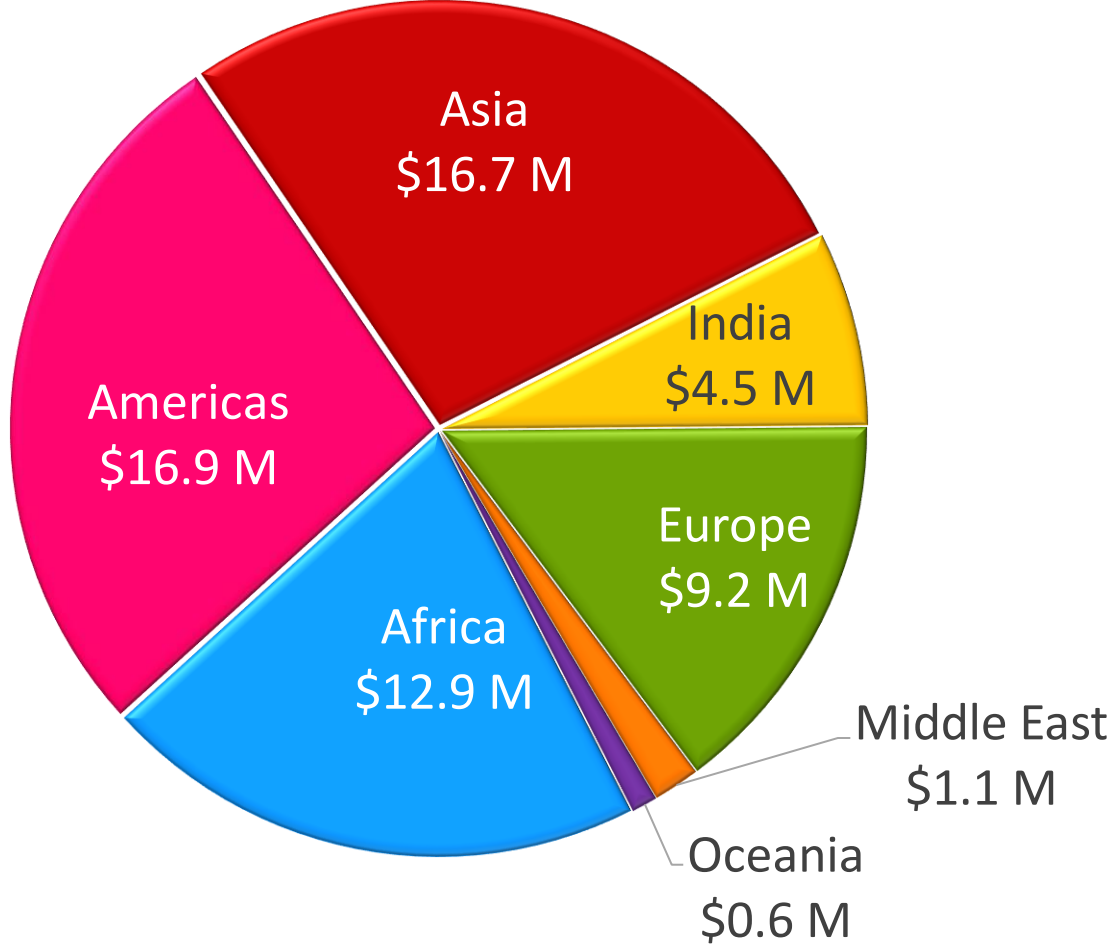
COMMUNITY ECONOMIC DEVELOPMENT TOTAL FUNDING YEAR TO YEAR (RY2014-19)



COMMUNITY ECONOMIC DEVELOPMENT FUNDED ACTIVITIES (RY2014-19)



COMMUNITY ECONOMIC DEVELOPMENT GRANTS BY REGION (RY2014-19)



OPPORTUNITIES

CED Projects:

- ✓ Put the human at the center of his/her own development
- ✓ Have a more holistic approach to poverty (promote livelihoods and protect against external shocks)

CED CHALLENGES

The biggest challenges facing Rotarians designing and implementing CED grants are:

- ✓ CED grants are Human capital development projects (requires more scrutiny – esp. community assessment)
- ✓ One size cannot fit all
- ✓ Infrastructure /equipment needs to be contextualized
- ✓ Cost/Benefit analysis and sustainability important

COVID-19: THE HUNGER VIRUS

- COVID-19 is deepening the hunger crisis in the world's hunger hotspots and creating new epicenters of hunger across the globe. By the end of the year **12,000 people** per day could die from hunger linked to COVID-19, potentially more than will die from the disease itself
- The **10 extreme hunger** hotspots where the food crisis is most severe and getting worse as a result of the pandemic: **Yemen, Democratic Republic of Congo (DRC), Afghanistan, Venezuela, the West African Sahel, Ethiopia, Sudan, South Sudan, Syria and Haiti**
- New hunger hotspots are also emerging. Middle-income countries such as **India, South Africa, and Brazil** are experiencing rapidly rising levels of hunger

WHAT ROTARIANS ARE DOING IN THE WORLD ?

- Most Clubs in the world are helping their communities manage hunger (local foodbank organization, small local distribution through district grants and community Services)
- Other Rotarians are organizing their clubs and districts for larger and impactful global grants (India, Brazil)
- Other Rotarians are organizing fundraising activities for their club, district and Rotary Foundation

CADRE TRISTAM'S EXPERIENCE

1. Your primary message, as a new GG team member, you are simply trying to help create success
2. Confirm consistency throughout description of the GG
3. Impact measures should include qualitative as well as quantitative indices
4. Market studies are often very weak elements of a proposal
5. Sustainability in GGs means transitioning from short-term financial support to "profitability"

6. Contingency plans are very important where relevant
7. Share GGs under review with other Cadre
8. Share GGs under review with your club and/or district
9. Share comments/suggestions with Rotary Grant Officer

For more questions please contact Rotarian Johnson at tristamjr@gmail.com



QUESTIONS